



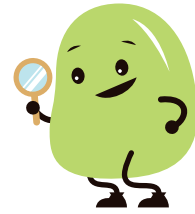
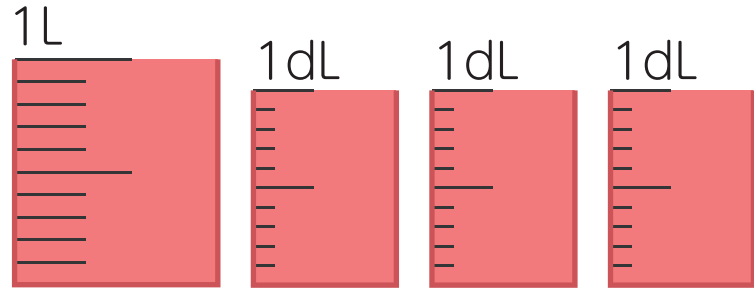
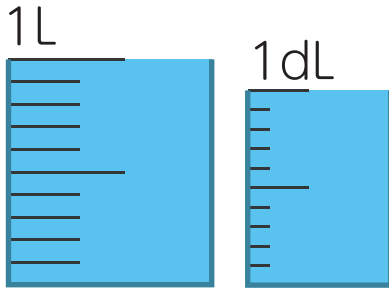
Addition and Subtraction

Water Volume

How much liquid
in total?

Solve the addition.

① $1\text{L } 1\text{dL} + 1\text{L } 3\text{dL} =$



② $4\text{L } 2\text{dL} + 2\text{L} =$

③ $1\text{L } 6\text{dL} + 1\text{dL} =$

④ $7\text{L} + 2\text{L } 5\text{dL} =$

⑤ $5\text{L } 1\text{dL} + 3\text{L } 7\text{dL} =$

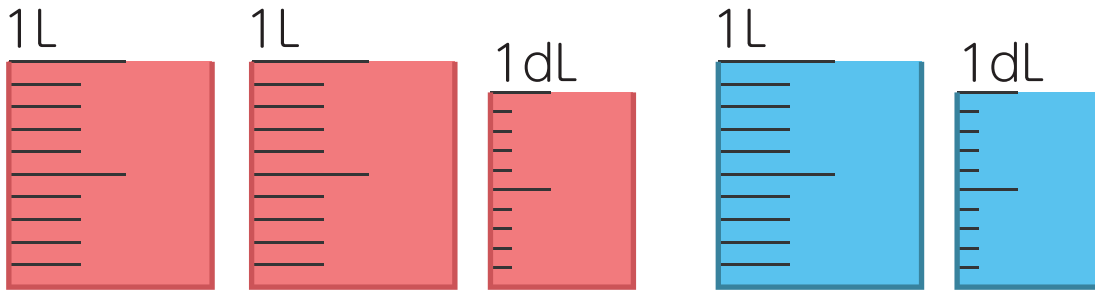
⑥ $1\text{L } 4\text{dL} + 3\text{L } 4\text{dL} =$

2 Addition and Subtraction

Water Volume

Solve the subtraction.

① $2\text{L } 1\text{dL} - 1\text{L } 1\text{dL} =$



② $5\text{L } 7\text{dL} - 2\text{L } 2\text{dL} =$

③ $8\text{L } 5\text{dL} - 4\text{dL} =$

④ $3\text{L } 3\text{dL} - 1\text{L } 1\text{dL} =$

⑤ $9\text{L } 6\text{dL} - 6\text{L} =$

⑥ $4\text{L } 9\text{dL} - 4\text{L } 3\text{dL} =$

3

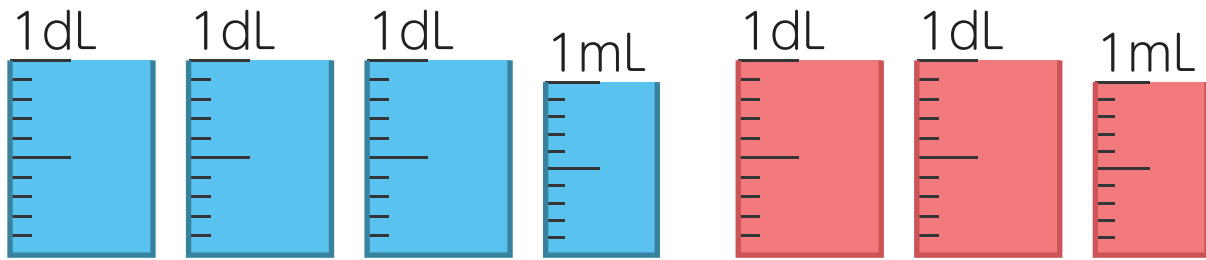
Addition and Subtraction

Water Volume

Be careful
with the units!

Solve the addition and subtraction.

① $3\text{dL } 1\text{mL} + 2\text{dL } 1\text{mL} =$



② $7\text{dL } 3\text{mL} - 5\text{dL } 2\text{mL} =$

③ $5\text{dL } 5\text{mL} + 4\text{dL } 1\text{mL} =$

④ $9\text{dL } 8\text{mL} - 5\text{mL} =$

⑤ $6\text{dL } 2\text{mL} - 1\text{dL} =$

⑥ $2\text{mL} + 3\text{dL } 7\text{mL} =$