

I Reading Scales



$$1 \text{ kg} = 1000 \text{ g}$$

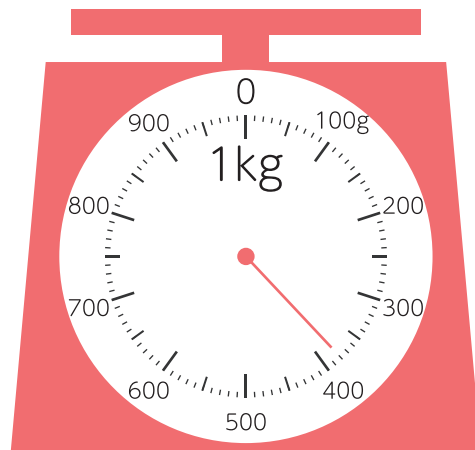
Write down the weight in grams (g).

1



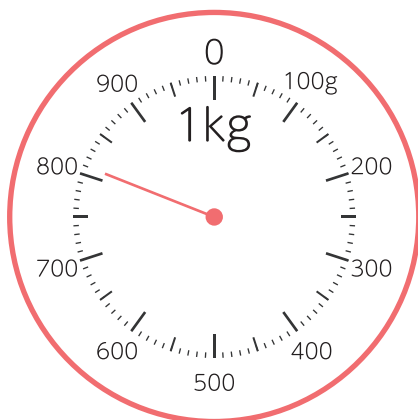
(g)

2



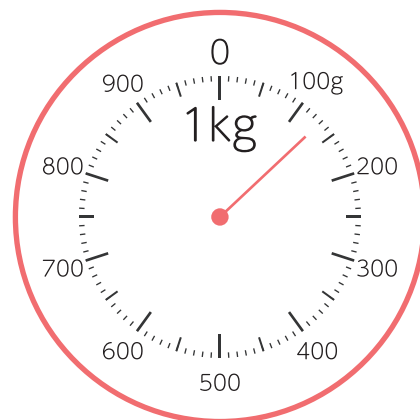
(g)

3



()

4

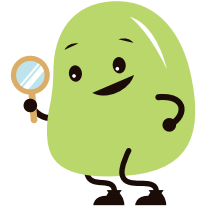


()

2 Reading Scales

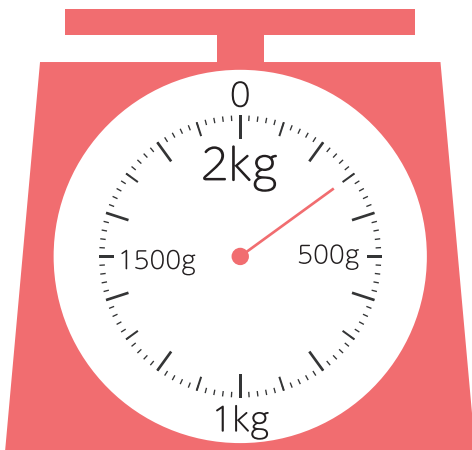


Write down the weight in grams (g).



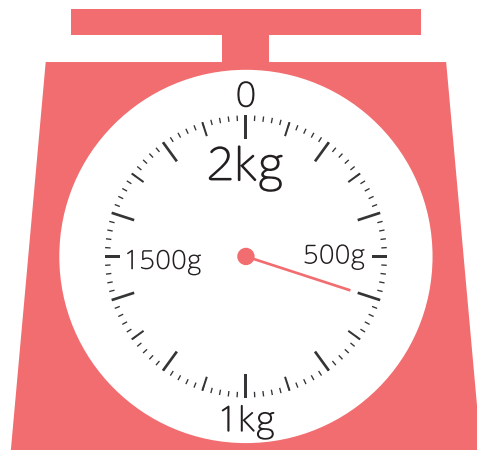
$$1 \text{ kg} = 1000 \text{ g}$$

①



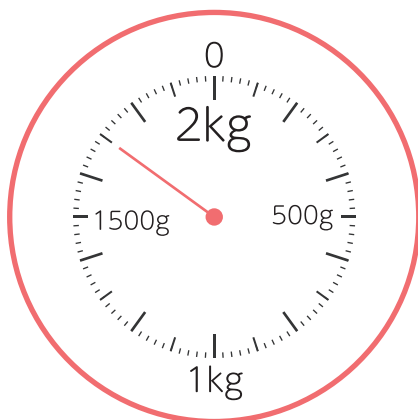
(g)

②



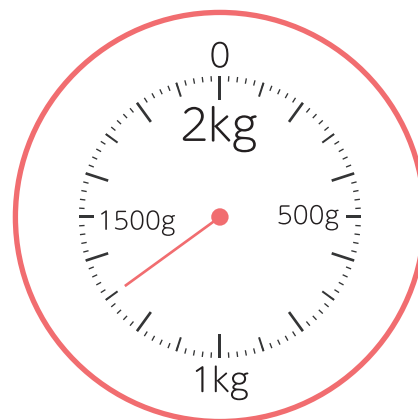
(g)

③



()

④



()



3

Decimal

Reading Scales

$$100 \text{ g} = 0.1 \text{ kg}$$

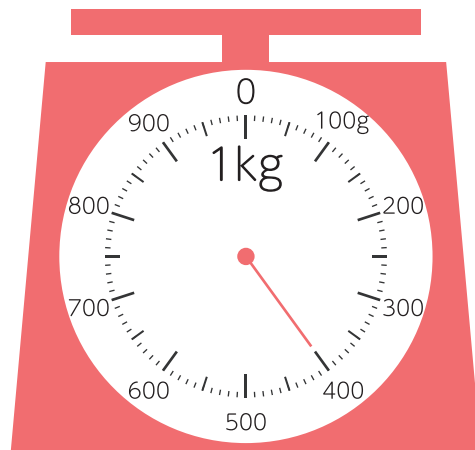
Write down the weight in kilograms (kg).

1



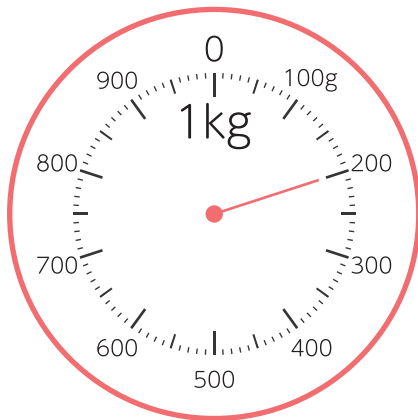
(kg)

2



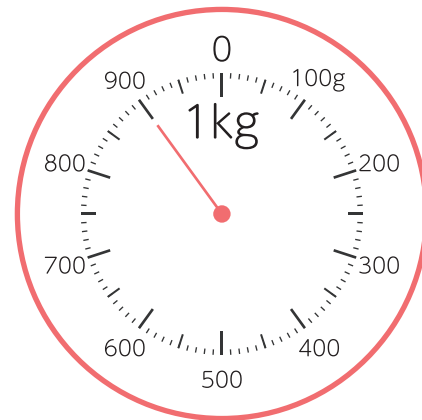
(kg)

3



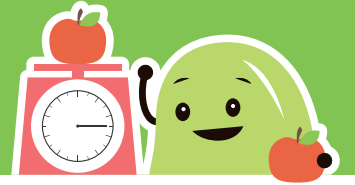
()

4

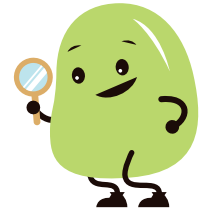


()

4

Decimal
Reading Scales

Write down the weight in kilograms (kg).



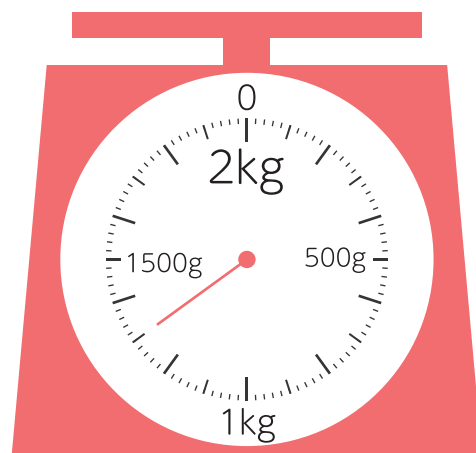
$$100 \text{ g} = 0.1 \text{ kg}$$

1



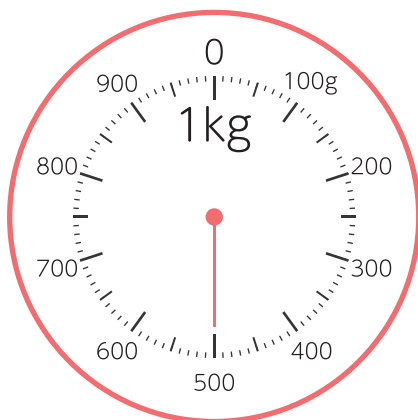
(kg)

2



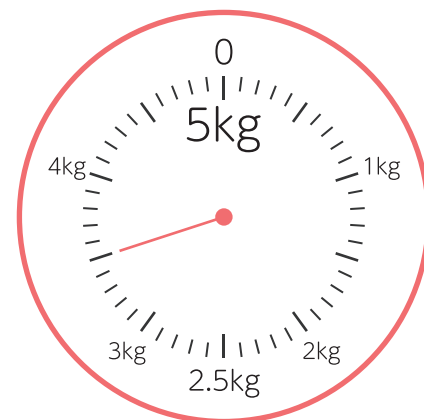
(kg)

3



()

4



()