



Math

Name \_\_\_\_\_

MAZE

# SINGLE DIGIT MULTIPLICATION

1

Choose the correct answer and get to the goal!

**START**

$1 \times 3 =$

4

3

$4 \times 2 =$

8

6



$2 \times 7 =$

8

14

$6 \times 1 =$

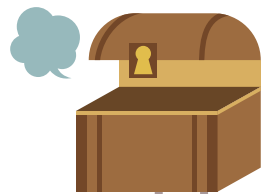
6

5

$5 \times 5 =$

25

20



**GOAL** ✨



Choose the correct answer and get to the goal!

**START**

$2 \times 3 =$

5      6

$8 \times 4 =$

12      32

$4 \times 6 =$

24      10

$1 \times 9 =$

9      10

$6 \times 8 =$

46      48

$7 \times 5 =$

30      35

**GOAL**

Obstacles: treasure chest, angry cloud, hole, and two barriers.



Choose the correct answer and get to the goal!

**START**

$3 \times 6 =$

18      19

$2 \times 5 =$

10      7

$6 \times 7 =$

42      49

$4 \times 4 =$

18      16

$9 \times 9 =$

81      72

$1 \times 7 =$

8      7

**GOAL**