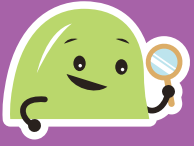




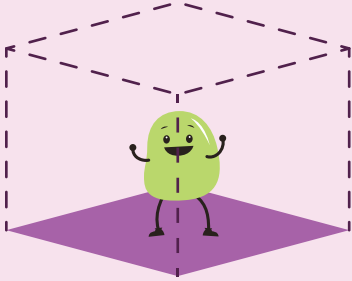
Name



1

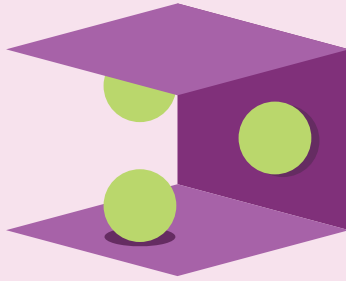
in / on / at

in



何かの中にある  
イメージ

on



何かにくっついている  
イメージ

at



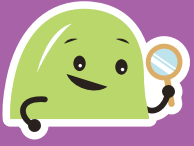
一か所にいるイメージ

◆ つぎの文章の中から in , on , at を探し、○でかこみましょう。

- ① There are a lot of oranges on the tree.
- ② He is swimming in the pool.
- ③ I'm on the bus. My friend is waiting at the bus stop.
- ④ My mother works in the bank.
- ⑤ The book is on the table.
- ⑥ I live in Hokkaido. It is in the north of Japan.



Name



2

in / on / at

in

in a room

部屋の中に

in a shop

店の中に

in a garden

庭に

on

• on a table

テーブルの上に

• on a wall

壁に

• on a bus

バスに

at

• at home

家で

• at work

仕事場で

• at school

学校で

◆ ( ) に in , on , at を正しく書き入れ、文を完成させましょう。

① Your key is ( ) the table.

② My brother is studying ( ) school.

③ Ken is ( ) the shop.

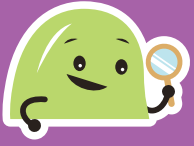
④ I left my umbrella ( ) the bus.

⑤ There is a clock ( ) the wall.

⑥ We will have a barbecue ( ) the garden.



Name



3

in / on / at

in

in Tokyo

東京に

in a book

本の中に

in a photograph

写真の中に

on

• on a train

電車に

• on the first floor

一階に

• on the way home

家への道で

at

• at the bus stop

バス停に

• at the door

玄関(ドア)に

• at the station

駅に

◆ ( ) に in , on , at を正しく書き入れ、文を完成させましょう。

① There is someone ( ) the door.

② He lives ( ) the first floor.

③ I met her ( ) the station.

④ The concert was held ( ) Tokyo.

⑤ Who is the girl ( ) the photograph?

⑥ There are many interesting stories ( ) the book.