

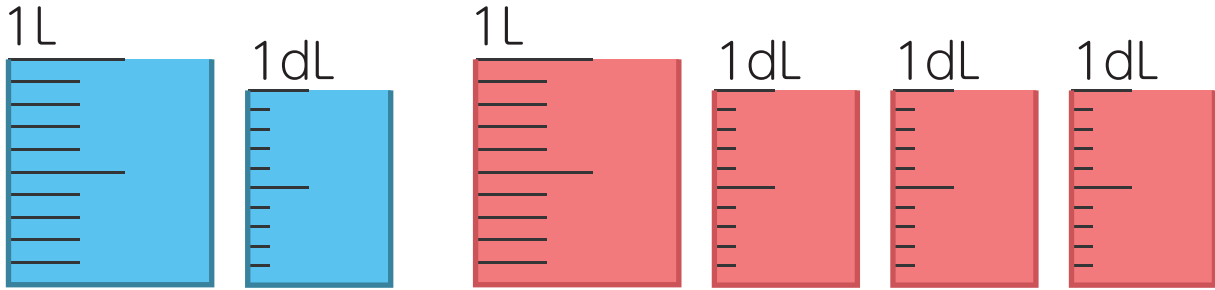
# 1

## ◆かさの計算

### 水のかさ

□ かさの計算をしましょう。

①  $1\text{L } 1\text{dL} + 1\text{L } 3\text{dL} =$



②  $4\text{L } 2\text{dL} + 2\text{L} =$

③  $1\text{L } 6\text{dL} + 1\text{dL} =$

④  $7\text{L} + 2\text{L } 5\text{dL} =$

⑤  $5\text{L } 1\text{dL} + 3\text{L } 7\text{dL} =$

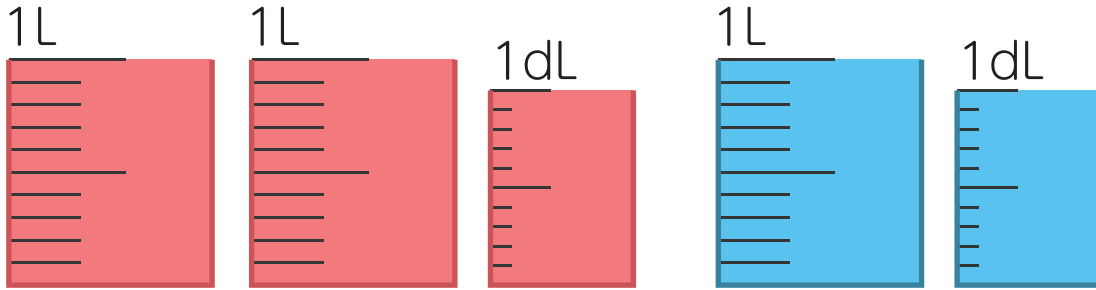
⑥  $1\text{L } 4\text{dL} + 3\text{L } 4\text{dL} =$

# 2

## ◆かさの計算 水のかさ

□ かさの計算をしましょう。

①  $2\text{L } 1\text{dL} - 1\text{L } 1\text{dL} =$



②  $5\text{L } 7\text{dL} - 2\text{L } 2\text{dL} =$

③  $8\text{L } 5\text{dL} - 4\text{dL} =$

④  $3\text{L } 3\text{dL} - 1\text{L } 1\text{dL} =$

⑤  $9\text{L } 6\text{dL} - 6\text{L} =$

⑥  $4\text{L } 9\text{dL} - 4\text{L } 3\text{dL} =$

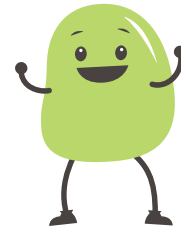
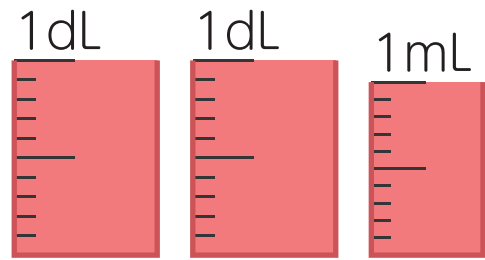
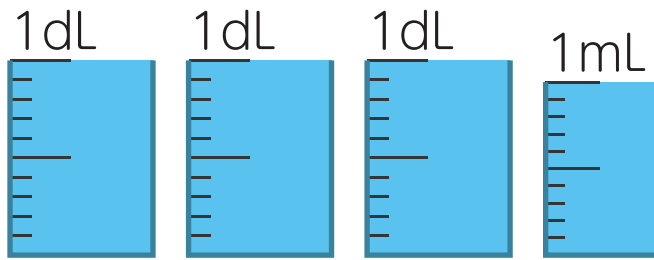
## 3

◆かさの計算

## 水のかさ

□ かさの計算をしましょう。

①  $3\text{dL } 1\text{mL} + 2\text{dL } 1\text{mL} =$

たんいに  
ちゅういしよう!

②  $7\text{dL } 3\text{mL} - 5\text{dL } 2\text{mL} =$

③  $5\text{dL } 5\text{mL} + 4\text{dL } 1\text{mL} =$

④  $9\text{dL } 8\text{mL} - 5\text{mL} =$

⑤  $6\text{dL } 2\text{mL} - 1\text{dL} =$

⑥  $2\text{mL} + 3\text{dL } 7\text{mL} =$